

**RECEIVED***By Town Clerk's Office at 11:50 am, Apr 13, 2022*

TOWN OF BURLINGTON

Meeting Minutes

Email minutes to meetings@burlington.org or Bring to the Clerk's Office. Thank you

Minutes need to be posted within 30 days or 2 meetings of the board – Draft minutes can be posted and revised at a later date

DEPT./BOARD: Transportation Committee
DATE: 3/2/2022
TIME: 6:30pm
PLACE: Webex

In attendance: Marge Yetman, Ernie Covino, Rick Parker, Melissa Massardo, Melissa Interest, Jeremy Harrington

Others: Patricia O'Brien, Judy Crocker, Jennifer Gelinis, Mildred Nash, Eileen Sickler

Meeting called to order at 6:34p

Minutes

1. Approve minutes from 2/2/2022 meeting - approved unanimously
2. Judy Crocker, Safe Routes to School (K-8 program) presentation (see attached slides) and Q&A
 - a. Ratio of applicants to awardees for Signs & Lines grant funding – 5 per year receive; technical assistance is also available; Large infrastructure grant is engineering based and takes partnership with municipal staff; Looking for active participants in the program
 - b. Burlington eligible in September for FY23 funding; signed onto the program in August 2021
 - c. Judy requests alliance partnership from the Committee as well as buy-in to create a strategic plan
 - d. Free programming and technical assistance is available now: walking audits, maps, etc
 - e. Survey of the parents is recommended and available through SRTS program
 - f. Could also campaign for bus ridership
 - g. Arrival/dismissal plans can include vehicle counts for those times
 - h. Recommendation for traffic studies around the schools
 - i. Melissa M agreed to provide update to School Committee during Public Participation
3. Chair report
 - a. Rick gave presentation to business community regarding business needs during the day
 - i. Burlington working on more Life Sciences companies – culture of those businesses is different; shuttling in
 - ii. Rick showed draft transit routes to manage business community needs during the day
 1. Discussed possible funding options
 - b. POGO: Jeremy passed along updated slide deck from them; they are open to shifting costs based on our needs
4. Next meeting date – 4/6/2022
5. Adjournment at 8:15p - Unanimous approval





Burlington Transportation Advisory Committee, March 2022

Promoting Sustainable Student Transportation

Judith Crocker, MA Statewide Lead and Senior Outreach Coordinator



This report is for informational purposes only. These recommendations include components of the Massachusetts Safe Routes to School (SRTS) Program. Your local SRTS outreach coordinator may facilitate or take part in discussions and provide direct program offerings. Please note that your SRTS outreach coordinator cannot advocate for state or municipal policy and/or infrastructure-related work. Furthermore, your SRTS outreach coordinator cannot make direct engineering or municipal planning recommendations. All photos and maps are the property of SRTS (unless otherwise noted) and cannot be reproduced without written permission. Due to privacy concerns, program reports cannot be shared publicly without the express written permission of the named school(s).

Safety First

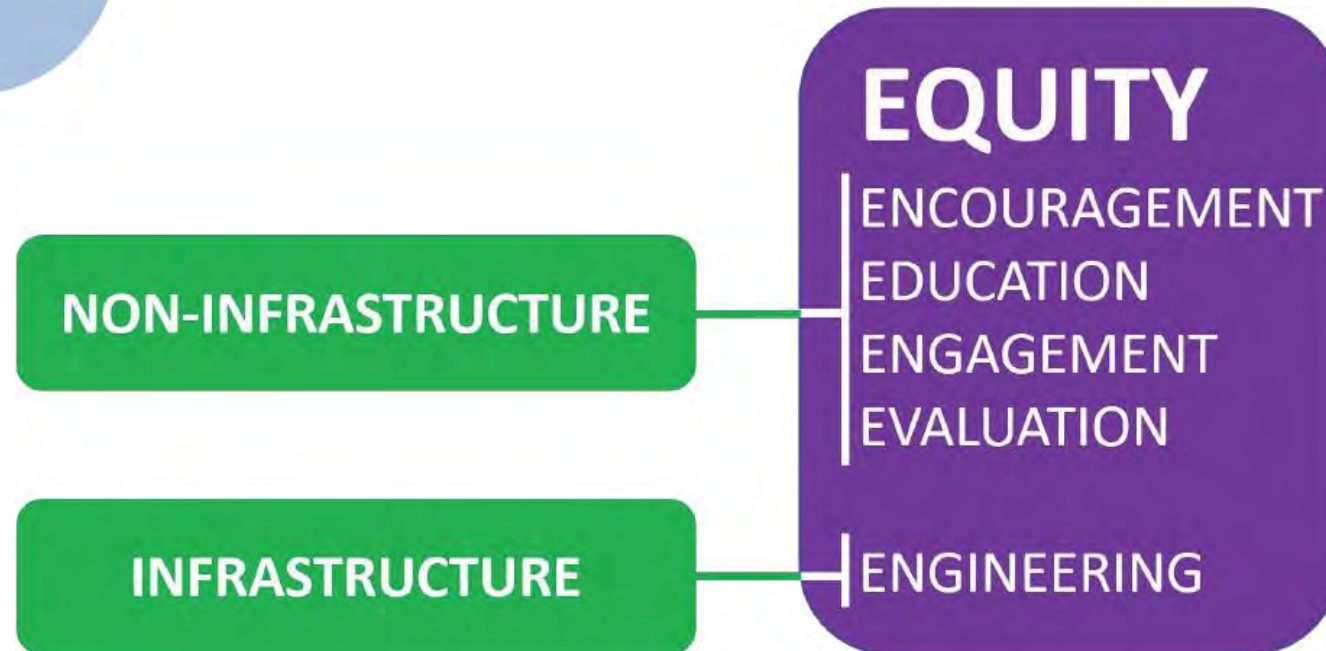


Meeting Local Needs

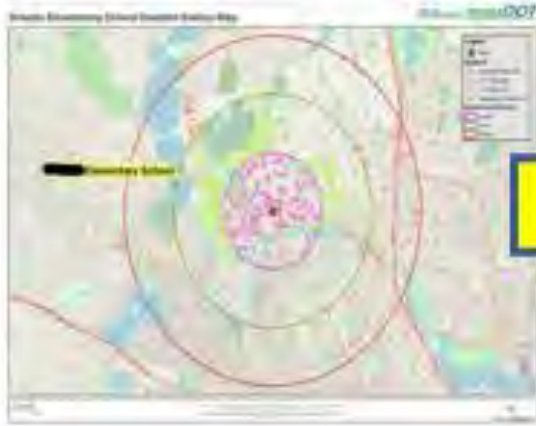
- Physical Activity
- Safety & Independence
- Traffic Congestion
- Built Environment
- Attendance and Tardiness
- Redistricting
- New Construction
- Change in School Start Times



The Six E's



Evaluation



Mapping



Route Maps
Park & Walk locations



Walking School Bus
Bike Trains



Celebrate!

Encouragement

- Flagship Walk/Bike/Roll Events
- Theme Days
- Walking School Buses
- Park and Walk
- Communication
- Task Force Formation



Winter Walk and Roll Day

Wednesday, February 2



Upcoming SRTS Events

Annual Yard Sign Contest
February 28 – March 25

MA SRTS Networking Call
March 16

Crossing Guard Appreciation Day
February 28- March 23

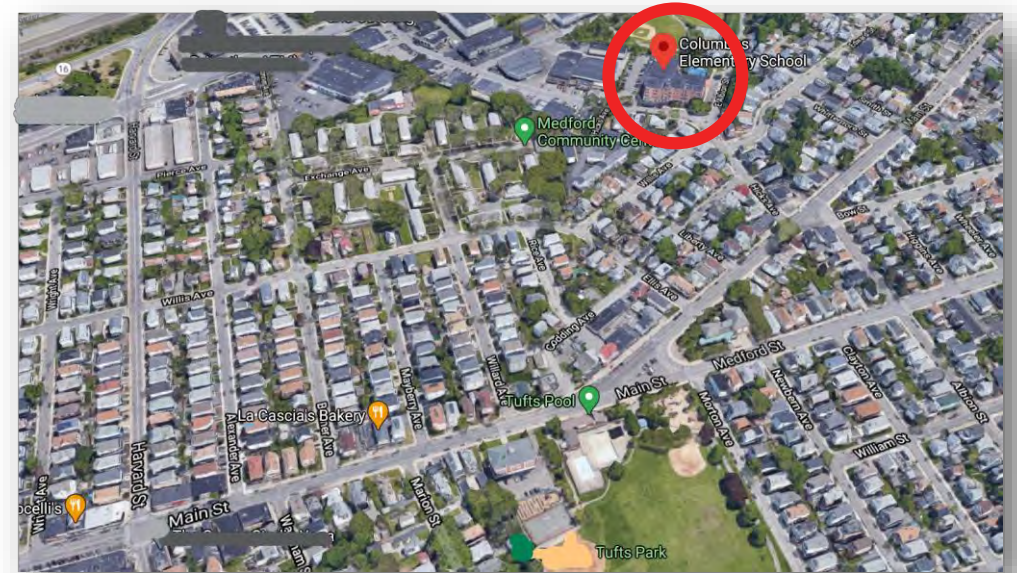
2021 Winning Designs



Engineering



Arrival/Dismissal Observation



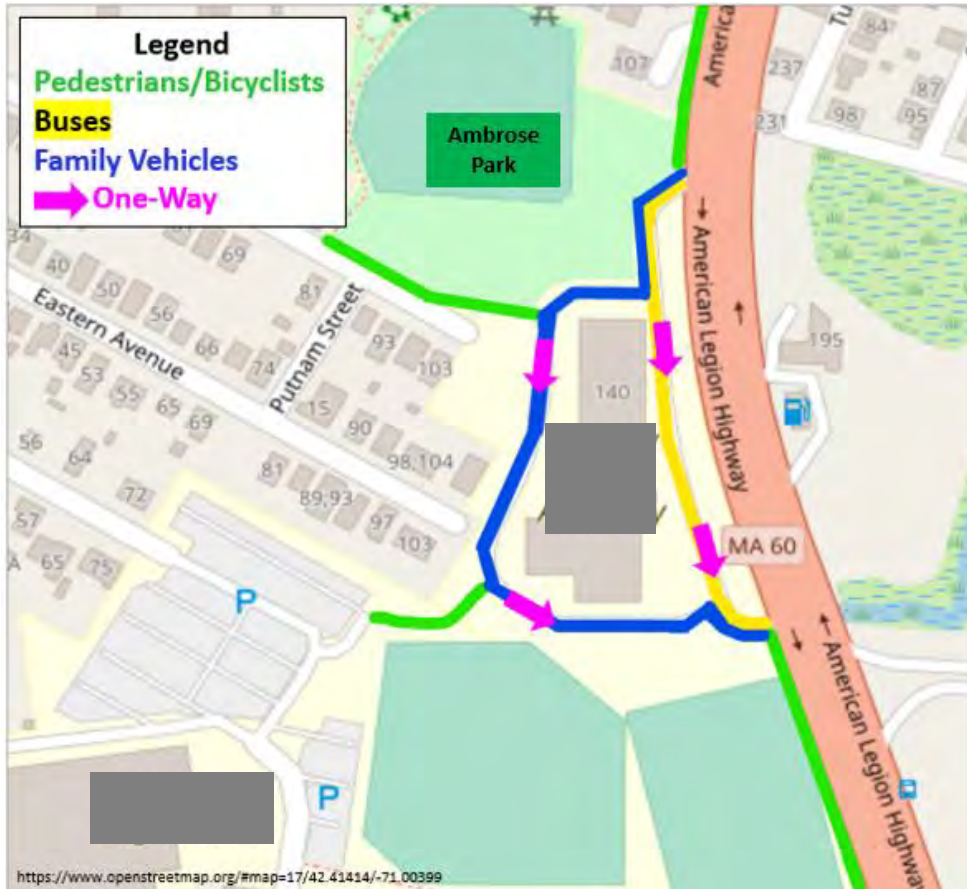
Walk Audit

Engagement

- Arrival & Dismissal Planning
- Crossing Guard Resources
- Police & School Resource Officers
- Communication



Engagement



Arrival & Dismissal Plan: [REDACTED]

Please be mindful of crosswalk, sidewalk, parking lot, and roadway safety.

For everyone's safety, all adults must sign in at the front office.

School Hours

- 7:35 a.m. – 2:20 p.m.

Arrival

- 7:35 a.m. – 7:50 a.m. – School breakfast
- 7:50 a.m. – Students arriving after this time will be marked tardy and will need to sign in at the front office

Dismissal

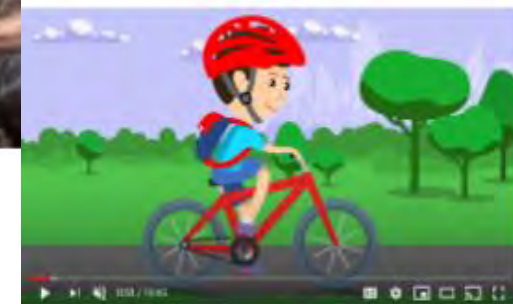
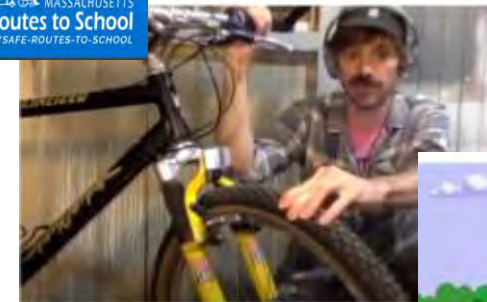
- 2:20 p.m.

Beginning in January 2022, the sixth-grade door will no longer be used

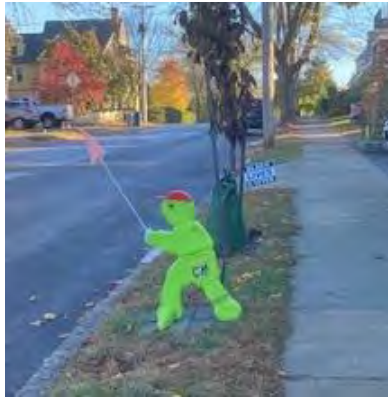
- ✓ **Walkers** - Please enter through the closest entrance.
- ✓ **Bikers** - Please use the bike racks located at the front and rear of the building and enter through the closest entrance.
- ✓ **Buses** - ONLY use the designated front school driveway. Students then enter through the front entrance (formally the seventh-grade door).
- ✓ **Family Vehicles** - ONLY use the designated rear school driveway. Students then enter through the rear entrance (formerly the eighth-grade door).
 - Pull all the way to the school's back door (formerly the 8th grade door)
 - Do NOT pass loading/unloading vehicles
 - Place your vehicle in park
 - Do NOT drop off or pickup in the high school parking lot
 - Do NOT idle your car engine
 - Students should ONLY enter or exit a car's right passenger side
 - Yield to pedestrians in crosswalks
- ✓ **Changes to Dismissal** - The front office requires a written note.

Education

- DESE-approved Professional Development recommended for Health & Wellness faculty
- Pedestrian Safety Curriculum (grades 2-3)
 - Skills-based, in-person, classroom curriculum
 - Lessons consist of sidewalk, crosswalk, and parking lot safety and are held outdoors on school property
- Bicycle Safety Curriculum (grades 2-4-8)
 - Assembly-style, in-person or virtual curriculum
 - Lessons consist of personal safety, bicycle safety, and rules of the road



Parents are not **In** Traffic, Parents **Are** the Traffic

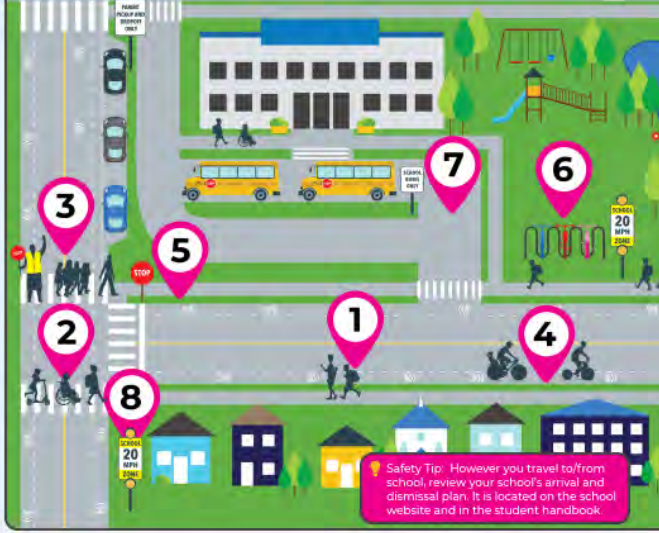


Arrival and Dismissal Tip Sheet

START THE SCHOOL DAY WITH CONFIDENCE

Student safety during arrival and dismissal is a school priority. By practicing these safety guidelines with your student, families can do their part to create a worry-free travel environment on and around school grounds.

- 1 Use sidewalks and walk facing traffic
- 2 Only cross at intersections or crosswalks
- 3 Follow Crossing Guard instructions
- 4 Ride your bike or scooter with traffic on the right side of the road
- 5 Follow all traffic signals and signs
- 6 Know biking routes and bike rack locations
- 7 School bus lanes are for school buses only
- 8 Be aware of school zones and obey their 20 MPH speed limits



Safety Tip: However you travel to/from school, review your school's arrival and dismissal plan. It is located on the school website and in the student handbook.

Safe Routes to School (SRTS) is a program offered by the Massachusetts Department of Transportation. The SRTS Program works to increase safe biking and walking among elementary and middle school students by using a collaborative, community-focused approach that bridges the gap between health and transportation. Learn more: www.mass.gov/safe-routes-to-school

Safe Routes to School
MASSACHUSETTS
mass.gov/safe-routes-to-school

NEW SEASON. NEW ROUTINE.

Why not try something new? Consider walking, biking, and rolling to and from school with your student.

- Lowers stress levels and adds exercise to your routine
- Improves student concentration for better academic performance¹
- Helps the environment by reducing traffic congestion around schools
- Reduces tardiness and improves school attendance²
- Builds community & social connections

GET TO SCHOOL SAFELY WITH THESE ACTIVITIES

Walking School Bus and Bike Trains: Walk, bike, and roll to school along a fixed route and invite other students to join you along the way.

Park, Walk, & Roll: If you don't live within walking or biking distance of the school, designate a Park, Walk, & Roll location, and allow your student to walk, bike, or roll the remaining way to school.

Walking Wednesdays and Flagship Events: Celebrate arriving and departing school with a no-cost or low-cost themed event.

Visit the Safe Routes Encouragement page for more ideas and to view our Walking School Bus and Bike Train Guide: www.mass.gov/info-details/safe-routes-to-school-encouragement

SIDEWALK 101

Be visible: Dress to be seen and always make eye contact with drivers.

Be aware of your surroundings: Look for cars in all directions and never assume the right of way.

Be courteous: Share the sidewalk and allow others to pass.

Be safe: Use sidewalks where available. If not available, be cautious of surroundings and walk facing traffic. Only cross streets at intersections and crosswalks.

Be alert: Unplug from distractions and avoid using phones and other devices.

READY TO ROLL

If your student plans to bike or roll to school, know your responsibilities.

Wear a helmet (legally required for ages 16 and under).
Mass. General Laws, chapter 8B, sec. 11B(2)

Install bike lights (required after dusk; white in front and red in rear).
Mass. General Laws, chapter 8B, sec. 11B

Obey all traffic laws and regulations.
Mass. General Laws, chapter 8B, sec. 11B

Ride bikes predictably and use hand signals to alert drivers of stops and turns.

Use sidewalks as needed unless prohibited by local laws.
Mass. General Laws, chapter 8B, sec. 11B

View a complete summary of Massachusetts' bike laws: www.massbikerguide.org/laws

FAMILY VEHICLE SAFETY

Give priority to pedestrians and cyclists.

Drive at a walking pace as you approach the school.

Follow Crossing Guard instructions.

Only load/unload in designated drop-off and pick-up areas.

Turn off your engine while waiting and place the vehicle in park ("P").

Students should only enter/exit on a vehicle's right passenger side.

Do not queue on public roadways.

Read MassDOT Safe Routes to School's Navigating School Zone Driving for more information: <https://www.mass.gov/info-details/safe-routes-to-school-education#driver-education>

¹ [http://www.ajmonline.org/article/S0749-3797\(08\)00035-6/fulltext](http://http://www.ajmonline.org/article/S0749-3797(08)00035-6/fulltext)

Safe Routes to School
MASSACHUSETTS
mass.gov/safe-routes-to-school

✓ Available in 9 Languages

Infrastructure Project Funding Programs

- **Signs and Lines Grants**
 - \$6K reimbursement to the municipality and approximately \$4K additional benefits in assessment and AECOM design services
 - New signage, removal of signage, crosswalk improvements, pavement markings
 - **FY22 awardees: Dedham, Haverhill, Melrose, Newton, Revere**
- **Safe Routes to School Infrastructure Grants**
 - \$300K to \$2 million projects
 - Sidewalk improvements, traffic calming, crossing improvements, on- and off-street bicycle & pedestrian facilities, traffic diversion
 - Nine FY22 projects were awarded in January

Burlington Public Schools: Sustainable Next Steps

- ✓ Partner all schools with the Safe Routes program (August 2021)
- ✓ Assign the Safe Routes to School program a BPS point person (Bob Cunha)
- Identify school community needs
- Create a Safe Routes Task Force & develop a strategic plan
- Conduct DESE-approved professional development for pedestrian and bicycle safety curriculum
- Adopt crossing guard training materials
- Adopt MASC-partnered Wellness Policy active transportation amendment
- Develop Student Walking/Biking Route Mapping

Burlington TAC

- Consider becoming a Safe Routes to School Alliance Partner
- Consider forming a Safe Routes to School subcommittee
 - *DRAFT Burlington Safe Routes Mission Statement*
Burlington's Safe Routes to School Task Force works to positively impact student safety and student active transportation through a sustainable, collaborative, and community-focused approach.
 - Working through individual school PTO committees/TAC , the common goal is to increase safe walking and rolling among Burlington students through education, infrastructure, planning, and engagement.*
- Develop a Safe Routes to School strategic plan

Celebrating Our Student Commuters

