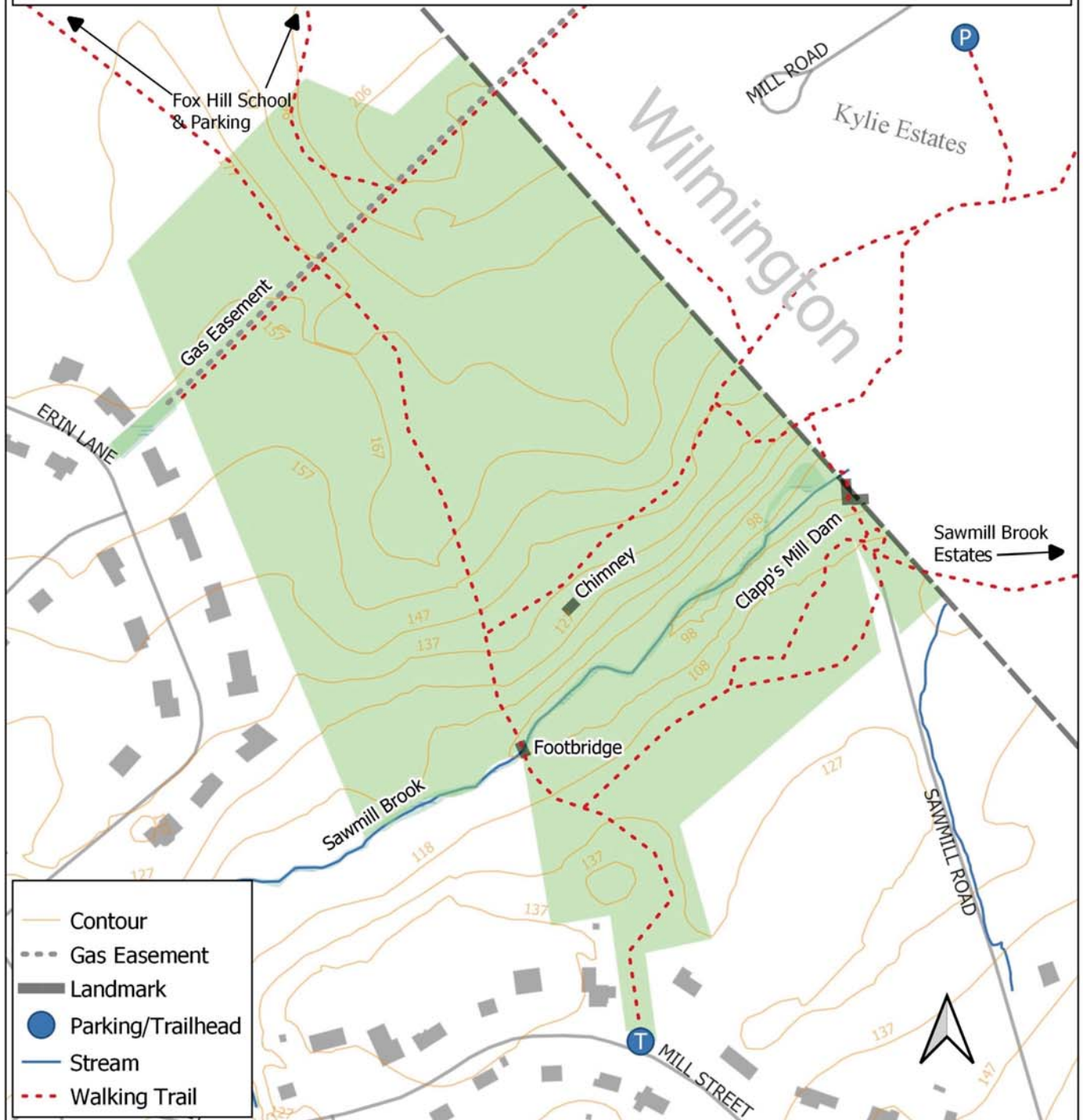




Sawmill Brook Conservation Area

TOWN OF BURLINGTON
29 CENTER STREET
BURLINGTON, MASSACHUSETTS 01803

Burlington Conservation Department
781-270-1655
conservation@burlington.org



Disclaimer:
This map, and the information herein is intended to be a reasonably accurate representation, but is not guaranteed. The Town of Burlington shall not be held responsible for the accuracy or misuse of this data.

0 100 200 300 400 500 Feet

Sawmill Brook Conservation Area

The Sawmill Brook Conservation Area features a 27-acre patchwork of wetlands, dry woodlands, and meadow surrounding Sawmill Brook. There are several trails throughout the property that afford visitors the opportunity to experience these different habitat types. The historic Clapp's Mill Dam can be seen at this Conservation Area. Visitors can access this property on foot by walking down Sawmill Road or the trails located along the gas line easement from Erin Lane, from the gate on Mill Street, or from the Fox Hill School property. Parking is available at the Fox Hill School. There are also multiple dedicated parking spots in the Kylie Estates in Wilmington.

The Sawmill Brook Conservation Area abuts open space at the Fox Hill School property and in neighboring Wilmington.

Rules and Regulations for Conservation Areas

Permitted uses/activities:

- ✓ Hike, run, ski, bike and snowshoe on trails prepared for these activities.
- ✓ Picnic on a carry-in, carry-out basis (no fires, stoves or grills).
- ✓ Use radios with earphones only.
- ✓ Walk dogs on a leash only.
- ✓ Camp overnight with special permission from the Conservation Commission.
- ✓ Have group picnics with special permission from the Conservation Commission.
- ✓ Ride horses with permission from the Conservation Commission and under dry conditions only.

Prohibited uses/activities:

- ✗ Litter or dump.
- ✗ Deface or vandalize.
- ✗ Hunt or trap.
- ✗ Remove plants, wildlife, rocks or soil.
- ✗ Feed wildlife.
- ✗ Cut firewood.
- ✗ Swim.
- ✗ Carry firearms.
- ✗ Play paintball games.
- ✗ Have campfires.
- ✗ Build shelters.
- ✗ Possess alcoholic beverages.
- ✗ Drive or ride motorized vehicles, including automobiles, trucks, motorcycles, trail bikes, snowmobiles, all-terrain vehicles (ATVs) or any other vehicles driven by motors.
- ✗ Prune or remove trees without permission from the Conservation Commission
- ✗ Add new trails without permission from the Conservation Commission

Burlington Police Department: Emergency# 911, Non-emergency# 781-272-1212