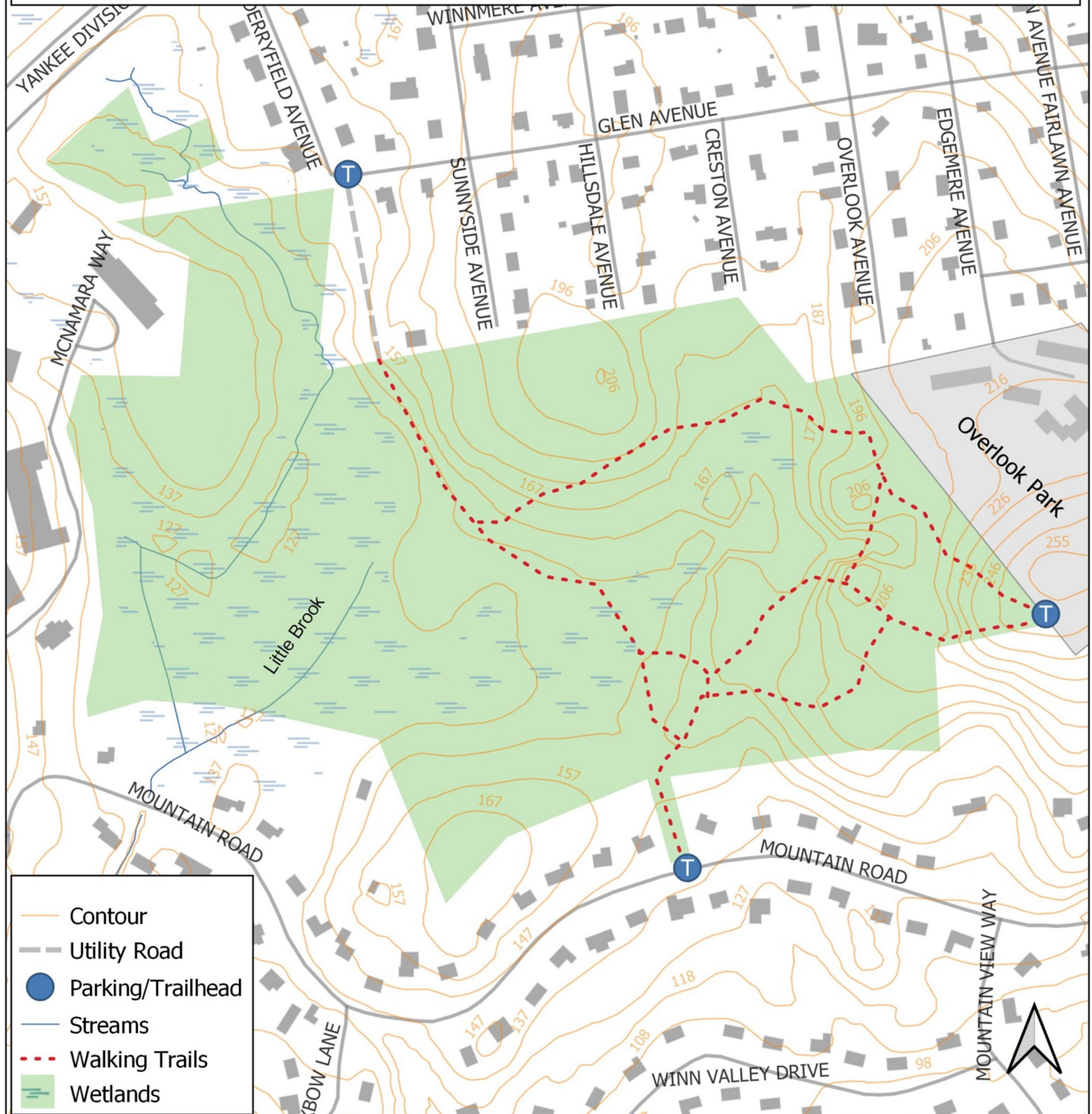




Little Brook Conservation Area

TOWN OF BURLINGTON
29 CENTER STREET
BURLINGTON, MASSACHUSETTS 01803

Burlington Conservation Department
781-270-1655
conservation@burlington.org



Disclaimer:

This map, and the information herein is intended to be a reasonably accurate representation, but is not guaranteed. The Town of Burlington shall not be held responsible for the accuracy or misuse of this data.

0 200 400 600 800 Feet

Little Brook Conservation Area

At 36 acres, Little Brook Conservation Area is the second largest conservation property in Burlington. Much of the area is steep, with low-lying wetlands in the western portion. Many marked and unmarked trails weave through the property and allow visitors to explore the extensive wetlands complex and the surrounding woods. Parking is easiest at Overlook Park, at the end of Edgemere Avenue, though access to the property from Overlook is down a fairly steep trail. Visitors can also access the park through a gate on Mountain Road or the end of Glen Avenue.

Rules and Regulations for Conservation Areas

Permitted uses/activities:

- ✓ Hike, run, ski, bike and snowshoe on trails prepared for these activities.
- ✓ Picnic on a carry-in, carry-out basis (no fires, stoves or grills).
- ✓ Use radios with earphones only.
- ✓ Walk dogs on a leash only.
- ✓ Camp overnight with special permission from the Conservation Commission.
- ✓ Have group picnics with special permission from the Conservation Commission.
- ✓ Ride horses with permission from the Conservation Commission and under dry conditions only.

Prohibited uses/activities:

- ✗ Litter or dump.
- ✗ Deface or vandalize.
- ✗ Hunt or trap.
- ✗ Remove plants, wildlife, rocks or soil.
- ✗ Feed wildlife.
- ✗ Cut firewood.
- ✗ Swim.
- ✗ Carry firearms.
- ✗ Play paintball games.
- ✗ Have campfires.
- ✗ Build shelters.
- ✗ Possess alcoholic beverages.
- ✗ Drive or ride motorized vehicles, including automobiles, trucks, motorcycles, trail bikes, snowmobiles, all-terrain vehicles (ATVs) or any other vehicles driven by motors.
- ✗ Prune or remove trees without permission from the Conservation Commission
- ✗ Add new trails without permission from the Conservation Commission

Burlington Police Department: Emergency# 911, Non-emergency# 781-272-1212