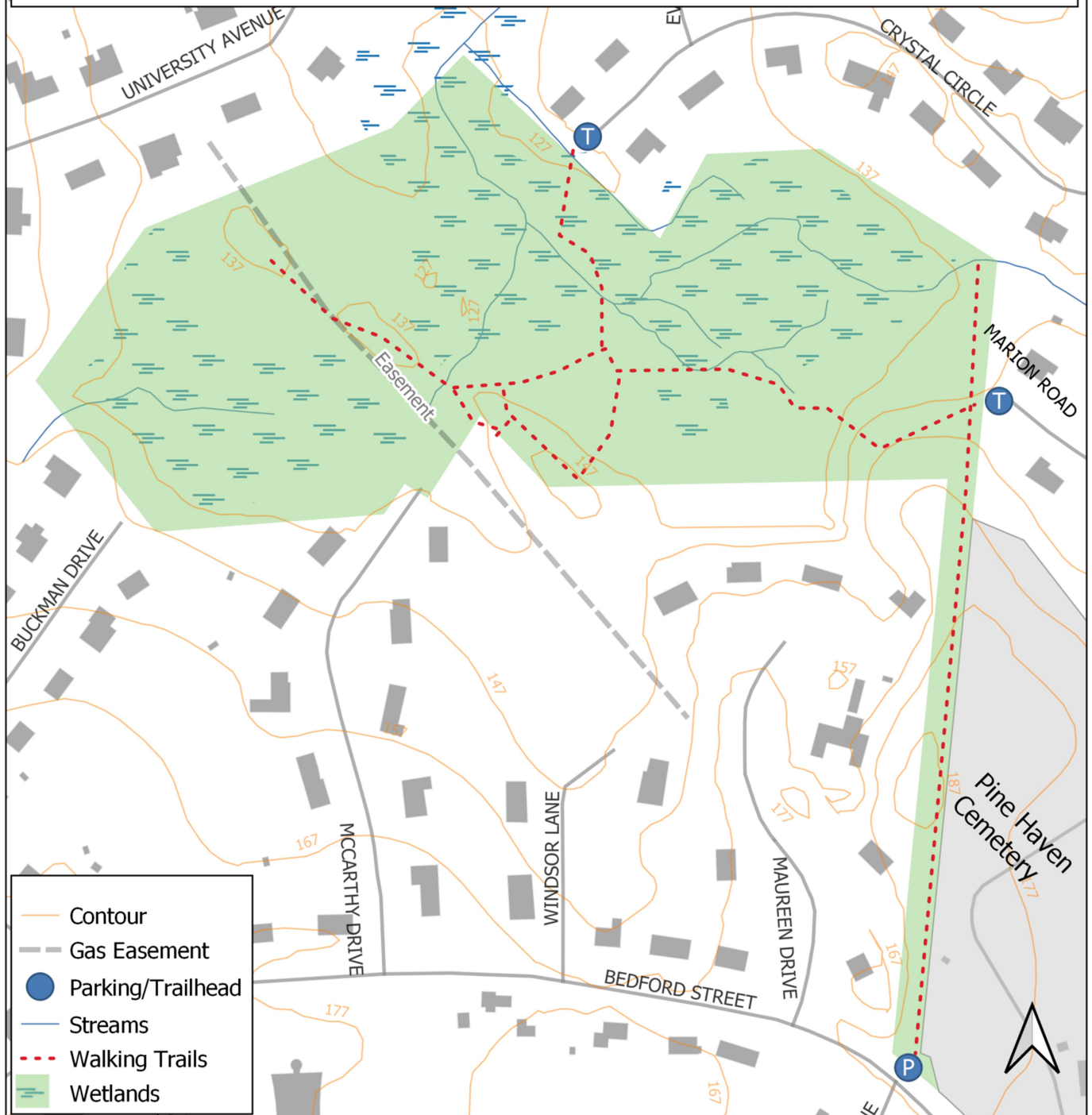




## Marion Road Conservation Area

TOWN OF BURLINGTON  
29 CENTER STREET  
BURLINGTON, MASSACHUSETTS 01803

Burlington Conservation Department  
781-270-1655  
[conservation@burlington.org](mailto:conservation@burlington.org)



**Disclaimer:**  
This map, and the information herein is intended to be a reasonably accurate representation, but is not guaranteed. The Town of Burlington shall not be held responsible for the accuracy or misuse of this data.

0 100 200 300 400 500 Feet

## Marion Road Conservation Area

Established in 2002 as a cooperative project between the Burlington Conservation Commission and the Commonwealth of Massachusetts, this 15 acre conservation area features a wonderfully diverse array of plant species, including the shagbark hickory. This species of hickory, *Carya ovata*, is not common in Burlington but these trees appear throughout this beautiful property. With wetlands and woodlands throughout, the trails here explore a variety of landscapes. Visitors to the Marion Road Conservation Area are encouraged to park in the dirt parking area on Bedford Street next to the Pine Haven Cemetery. Follow the path alongside the gas line equipment and the cemetery to the heart of the property beyond. Access is also possible at the end of Marion Road or at the end of Crystal Circle.

## Rules and Regulations for Conservation Areas

### Permitted uses/activities:

- Hike, run, ski, bike and snowshoe on trails prepared for these activities.
- Picnic on a carry-in, carry-out basis (no fires, stoves or grills).
- Use radios with earphones only.
- Walk dogs on a leash only.
- Camp overnight with special permission from the Conservation Commission.
- Have group picnics with special permission from the Conservation Commission.
- Ride horses with permission from the Conservation Commission and under dry conditions only.

### Prohibited uses/activities:

- × Litter or dump.
- × Deface or vandalize.
- × Hunt or trap.
- × Remove plants, wildlife, rocks or soil.
- × Feed wildlife.
- × Cut firewood.
- × Create new, unauthorized trails.
- × Swim.
- × Carry firearms.
- × Play paintball games.
- × Have campfires.
- × Build shelters.
- × Possess alcoholic beverages.
- × Drive or ride motorized vehicles, including automobiles, trucks, motorcycles, trail bikes, snowmobiles, all-terrain vehicles (ATVs) or any other vehicles driven by motors.
- × Prune or remove trees without permission from the Conservation Commission
- × Add new trails without permission from the Conservation Commission

**Burlington Police Department:** Emergency# 911, Non-emergency# 781-272-1212