

Town of
Burlington, MA
Incorporated February 28, 1799

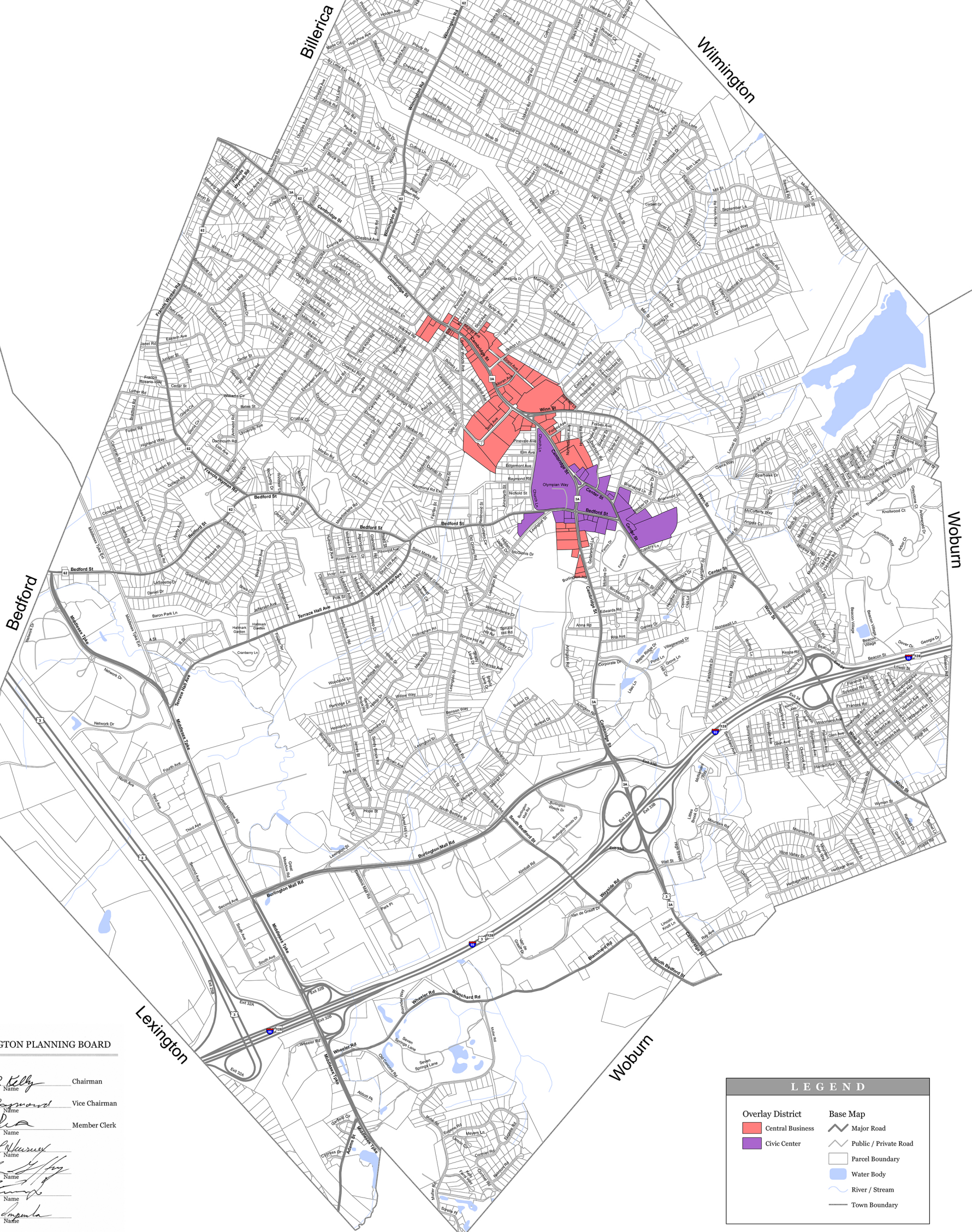


**Town Center
Overlay District**
Civic Center and
Central Business District
Zoning Overlay Map
2017

Note: Right-of-ways are for reference purposes only and do not denote zoning.

The GIS data represented in this map was adopted by the Town under Article 3 of the Warrant for Town Meeting, January 23, 2017.

Map created for the Burlington Planning Department, last revised February 23, 2017.



BURLINGTON PLANNING BOARD

John D. Kelly Chairman
Paul Raymond Vice Chairman
Paul Allen Member Clerk
Barbara L. Mearns
Will S. Hays
Bob T. Tupper
Joseph A. Laporte

LEGEND

- | | |
|---|-----------------------|
| Overlay District | Base Map |
| Central Business | Major Road |
| Civic Center | Public / Private Road |
| | Parcel Boundary |
| | Water Body |
| | River / Stream |
| | Town Boundary |

